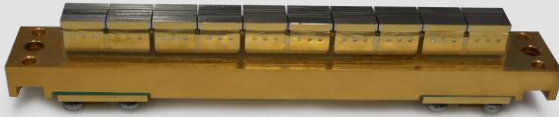


FOCUSPULSE®

Conduction Cooled Vertical Stacks

AA05



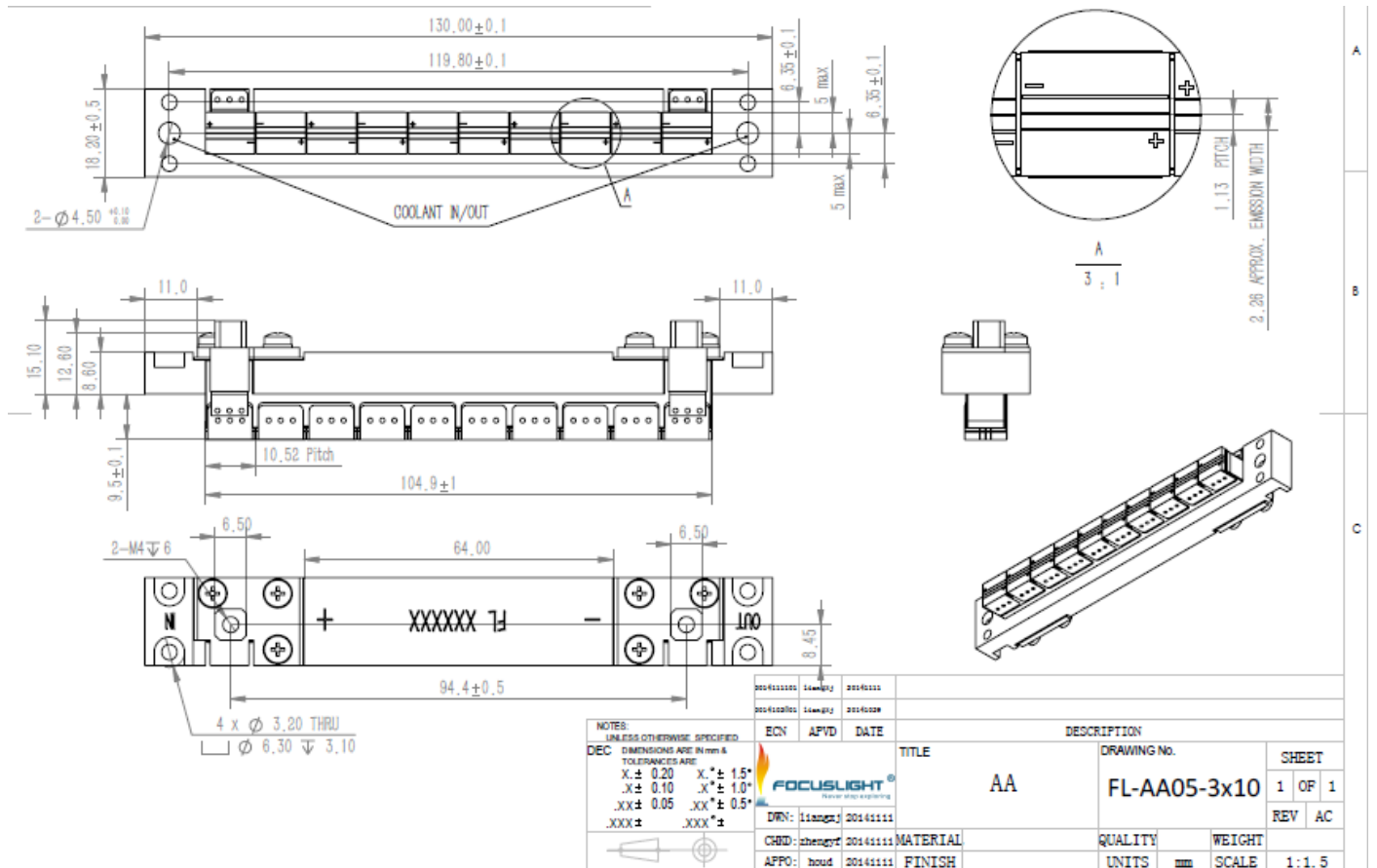
Features

- AuSn Bonding
- High duty cycle
- Customization
- High Power
- Collimation

Applications

- Pumping
- Illumination
- Industry

Device Dimension (mm)



Specification

Module Type ¹	Units	FL-AA05-N*1-X-#	
Operation Mode		QCW	
Pulse Width	us	≤400	
Frequency	Hz	≤400	
Duty Cycle	%	≤8	
Bar Pitch	mm	0.43, 0.73, 1.13, 2.13	
Expected Lifetime	shots	1X10 ⁹	
Optical Parameters ^{3,5}			
Center Wavelength λ	nm	808	9xx
Wavelength Tolerance	nm	±3	±5
Output Power/bar ²	W	100 ~ 400	
Number of Bars	-	3~30	
Spectral Width FWHM	nm	≤4	≤6
Spectral Width FW90%E	nm	≤6	≤8
Fast Axis Divergence(FWHM)	°	≤35	
Slow Axis Divergence (FWHM)	°	≤8	
Polarization Mode	-	TE/TM	
Wavelength Temp. Coefficient	nm/°C	~0.28	~0.33
Electrical Parameters ^{3,5}			
Operating Current I _{op}	A	120 ~ 430	
Threshold Current I _{th}	A	≤40	≤18
Operating Voltage/bar V _{op}	V/bar	≤2	
Slope Efficiency/bar	W/A	≥1	
Power Conversion Efficiency	%	≥55	≥60
Ambient Parameters			
Operating Temperature	°C	-45 ~ 60	
Recommended Operating Temperatu	°C	25	
Storage Temperature ⁴	°C	-55 ~ 85	

¹Explanation for the name of Module Type: FL(abbreviation of Focuslight) –GSxx (structure code) –N (Number of Bars) -X(Power) -#(center wavelength)(Q:QCW).

²Reduced lifetime if used above nominal operating conditions.

³Data at 25°C temperature, unless otherwise stated.

⁴A non-condensing environment is required for storage and operation below ambient dew point.

⁵If there are any other requirements, please contact us.



Focuslight Technologies Inc.

Add: 56 Zhangba 6th Road, High-Tech Zone

Xi'an, Shaanxi 710077, P. R. China

Tel: +86 29 8956 0050

Fax: +86 29 8177 5810

Email: sales@focuslight.com.cn

Website: www.focuslight.com.cn

Copyright ©2015 Focuslight. All rights reserved.



FOCUSPULSE®

Conduction Cooled Vertical Stacks

GS02



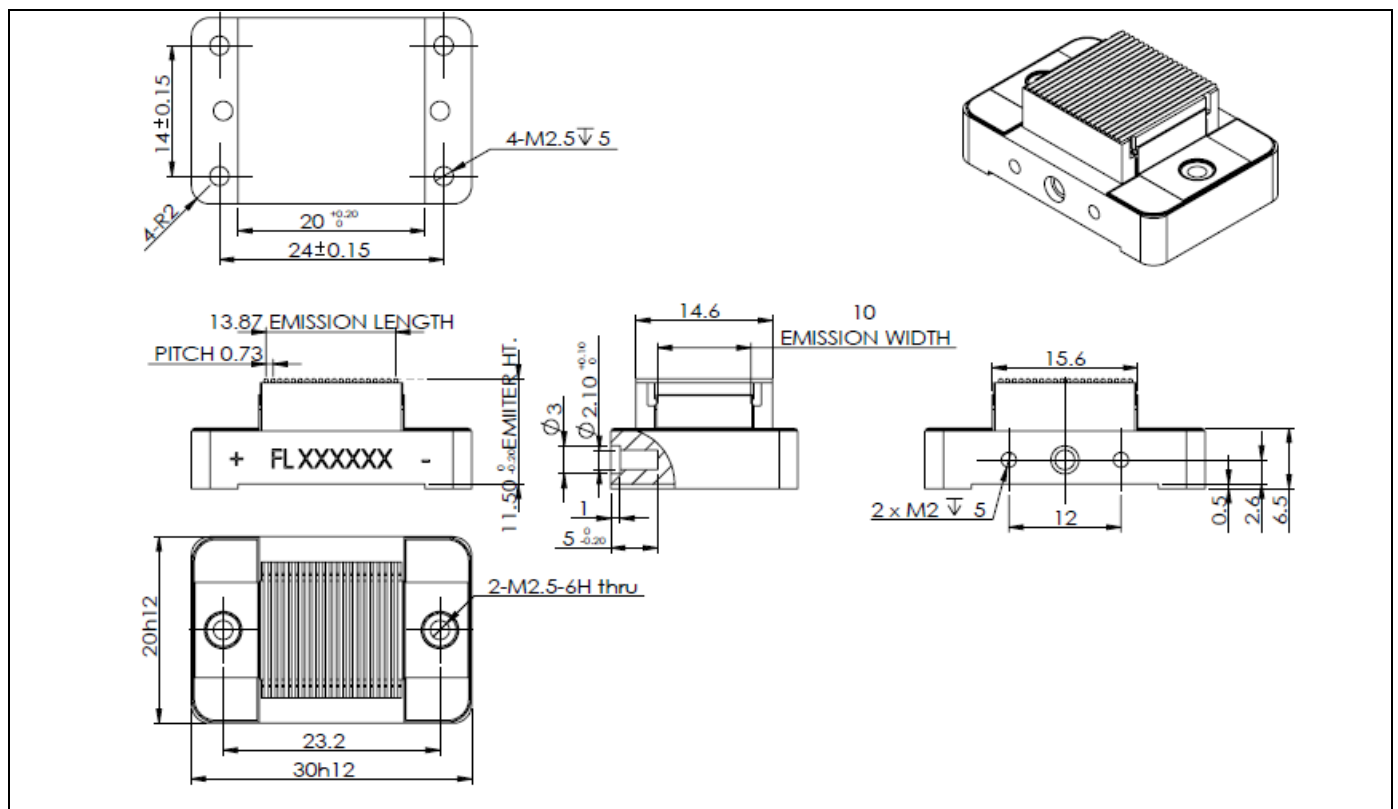
Features

- AuSn Bonding
- Collimation
- Harsh Environment Applications
- Multiple Bars
- Customization

Applications

- Pumping
- Illumination
- Industry
- Research

Device Dimension (mm)



Specification

Module Type ¹	Units	FL-GS02-N*1-X-#		
Operation Mode		QCW		
Pulse Width	us	≤400		
Frequency	Hz	≤100		
Duty Cycle	%	≤2		
Bar Pitch	mm	0.43,	0.73,	1.13
Expected Lifetime	shots	1X10 ⁹		
Optical Parameters^{3,5}				
Center Wavelength λ	nm	808	9xx	
Wavelength Tolerance	nm	±3	±5	
Output Power/bar ²	W	100 ~ 400		
Number of Bars	-	10~40	10~40	
Spectral Width FWHM	nm	≤4	≤6	
Spectral Width FW90%E	nm	≤6	≤8	
Fast Axis Divergence(FWHM)	°	≤35		
Slow Axis Divergence (FWHM)	°	≤8		
Fast Axis Divergence with collimation	°	≤5		
Polarization Mode	-	TE/TM		
Wavelength Temp. Coefficient	nm/°C	~0.28	~0.33	
Electrical Parameters^{3,5}				
Operating Current I _{op}	A	120 ~ 430		
Threshold Current I _{th}	A	≤40	≤18	
Operating Voltage/bar V _{op}	V/bar	≤2		
Slope Efficiency/bar	W/A	≥1		
Power Conversion Efficiency	%	≥55	≥60	
Ambient Parameters				
Operating Temperature	°C	-45 ~ 60		
Recommended Operating Temperatur	°C	25		
Storage Temperature ⁴	°C	-55 ~ 85		

¹Explanation for the name of Module Type: FL(abbreviation of Focuslight) –GSxx (structure code) –N (Number of Bars) -X(Power) -#(center wavelength)(Q:QCW).

²Reduced lifetime if used above nominal operating conditions.

³Data at 25°C temperature, unless otherwise stated.

⁴A non-condensing environment is required for storage and operation below ambient dew point.

⁵If there are any other requirements, please contact us.



Focuslight Technologies Inc.

Add: 56 Zhangba 6th Road, High-Tech Zone

Xi'an, Shaanxi 710077, P. R. China

Tel: +86 29 8956 0050

Fax: +86 29 8177 5810

Email: sales@focuslight.com.cn

Website: www.focuslight.com.cn

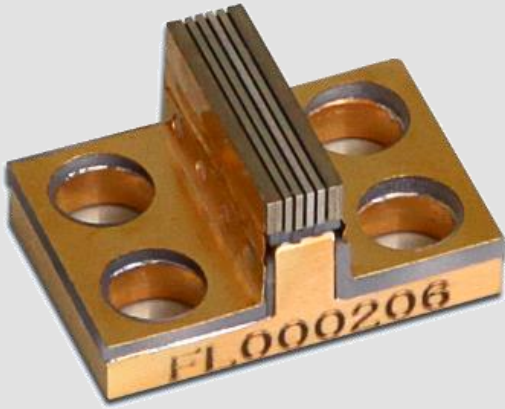
Copyright ©2015 Focuslight. All rights reserved.



FOCUSPULSE®

Conduction Cooled Vertical Stacks

GS03



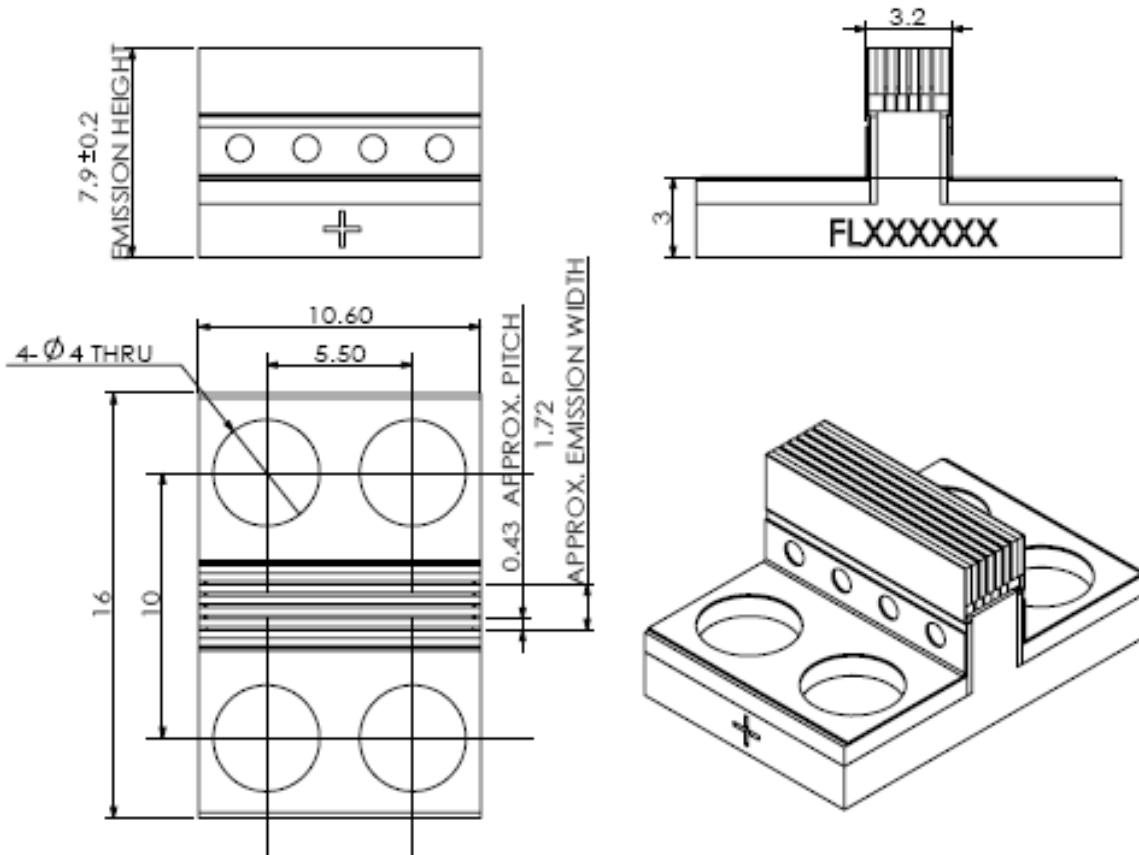
Features

- AuSn Bonding
- Low thermal resistance
- High Temperature application
- Narrow Spectrum
- Standard product

Applications

- Slab-pumping
- Illumination
- Industry
- Research

Device Dimension (mm)



Specification

Module Type ¹	Units	FL-GS03-N*1-X-#	
Operation Mode		QCW	
Pulse Width	us	≤400	
Frequency	Hz	≤100	
Duty Cycle	%	≤2	
Bar Pitch	mm	0.43, 0.73, 1.13	
Expected Lifetime	shots	1X10 ⁹	
Optical Parameters^{3,5}			
Center Wavelength λ	nm	808	9xx
Wavelength Tolerance	nm	±3	±5
Output Power/bar ²	W	100 ~ 400	
Number of Bars	-	2~12	
Spectral Width FWHM	nm	≤4	≤6
Spectral Width FW90%E	nm	≤6	≤8
Fast Axis Divergence(FWHM)	°	≤35	
Slow Axis Divergence (FWHM)	°	≤8	
Polarization Mode	-	TE/TM	TE
Wavelength Temp. Coefficient	nm/°C	-0.28	-0.33
Electrical Parameters^{3,5}			
Operating Current I _{op}	A	120 ~ 430	
Threshold Current I _{th}	A	≤40	≤18
Operating Voltage/bar V _{op}	V/bar	≤2	
Slope Efficiency/bar	W/A	≥1	
Power Conversion Efficiency	%	≥55	≥60
Ambient Parameters			
Operating Temperature	°C	-45 ~ 60	
Recommended Operating Tempera	°C	25	
Storage Temperature ⁴	°C	-55 ~ 85	

¹Explanation for the name of Module Type: FL(abbreviation of Focuslight) –GSxx (structure code) –N (Number of Bars) -X(Power) -#(center wavelength)(Q:QCW).

²Reduced lifetime if used above nominal operating conditions.

³Data at 25°C temperature, unless otherwise stated.

⁴A non-condensing environment is required for storage and operation below ambient dew point.

⁵If there are any other requirements, please contact us.



Focuslight Technologies Inc.

Add: 56 Zhangba 6th Road, High-Tech Zone
Xi'an, Shaanxi 710077, P. R. China

Tel: +86 29 8956 0050

Fax: +86 29 8177 5810

Email: sales@focuslight.com.cn

Website: www.focuslight.com.cn

Copyright ©2015 Focuslight. All rights reserved.



FOCUSPULSE®

Conduction Cooled Vertical Stacks

GS04



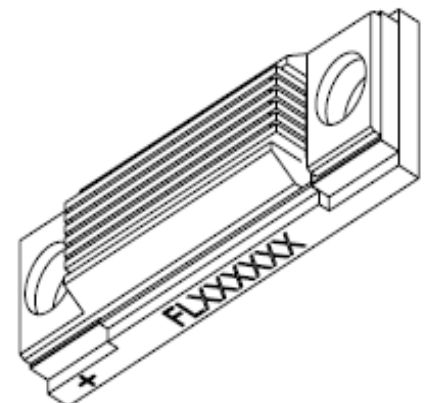
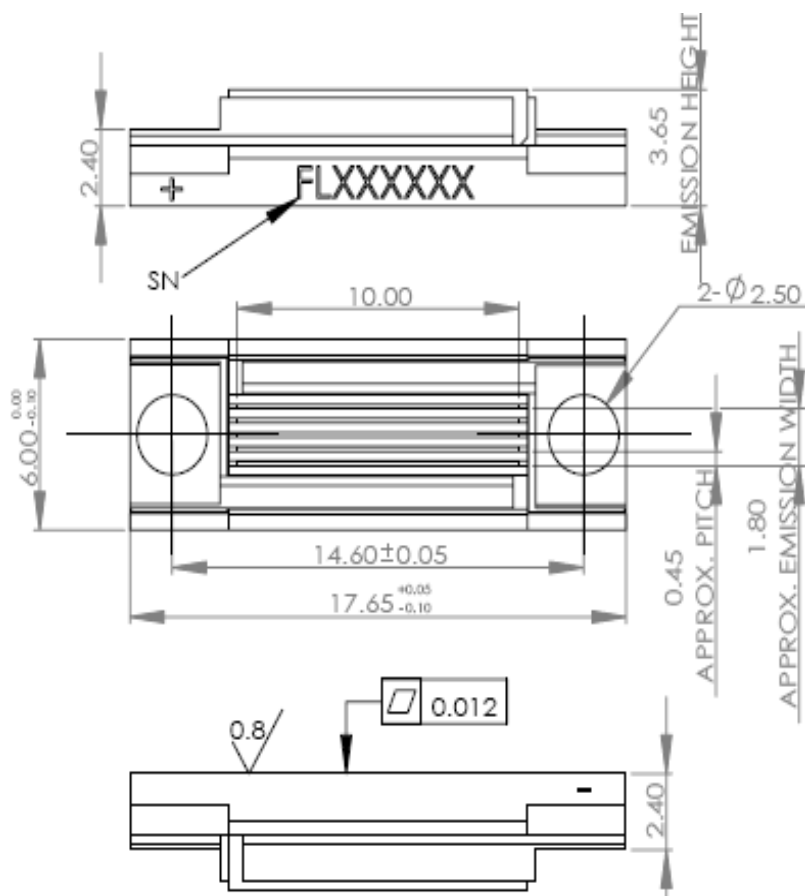
Features

- AuSn Bonding
- Compact Size for integration
- Harsh Environment Applications
- High reliability
- Long Lifetime

Applications

- Side-pumping
- Illumination
- Industry
- Research

Device Dimension (mm)



Specification

Module Type ¹	Units	FL-GS04-N*1-X-#	
Operation Mode		QCW	
Pulse Width	us	≤500	
Frequency	Hz	≤20	
Duty Cycle	%	≤1	
Bar Pitch	mm	0.43	
Expected Lifetime	shots	1X10 ⁹	
Optical Parameters^{3,5}			
Center Wavelength λ	nm	808	9xx
Wavelength Tolerance	nm	±3	±5
Output Power/bar ²	W	100 ~ 400	
Number of Bars	-	2~6	
Spectral Width FWHM	nm	≤4	≤6
Spectral Width FW90%E	nm	≤6	≤8
Fast Axis Divergence(FWHM)	°	35	
Slow Axis Divergence (FWHM)	°	8	
Polarization Mode	-	TE/TM	
Wavelength Temp. Coefficient	nm/°C	~0.28	~0.33
Electrical Parameters^{3,5}			
Operating Current I _{op}	A	100 ~ 420	
Threshold Current I _{th}	A	≤40	≤18
Operating Voltage/bar V _{op}	V	≤2	
Slope Efficiency/bar	W/A	≥1.1	
Power Conversion Efficiency	%	≥55	≥60
Ambient Parameters			
Operating Temperature	°C	-45 ~ 60	
Recommended Operating Tempera	°C	25	
Storage Temperature ⁴	°C	-55 ~ 85	

¹Explanation for the name of Module Type: FL(abbreviation of Focuslight) –GSxx (structure code) –N (Number of Bars) -X(Power) -#(center wavelength)(Q:QCW).

²Reduced lifetime if used above nominal operating conditions.

³Data at 25°C temperature, unless otherwise stated.

⁴A non-condensing environment is required for storage and operation below ambient dew point.

⁵If there are any other requirements, please contact us.



Focuslight Technologies Inc.

Add: 56 Zhangba 6th Road, High-Tech Zone

Xi'an, Shaanxi 710077, P. R. China

Tel: +86 29 8956 0050

Fax: +86 29 8177 5810

Email: sales@focuslight.com.cn

Website: www.focuslight.com.cn

Copyright ©2015 Focuslight. All rights reserved.

